









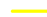
LÉGENDE

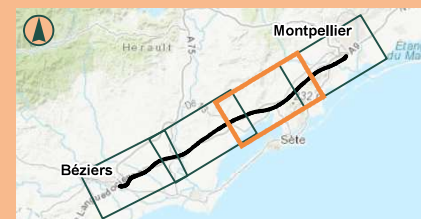
-  Limite communale
-  Voie ferrée existante

-  Première phase : Montpellier - Béziers
-  Ligne nouvelle ou raccordement (RAC)
-  Point kilométrique (PK)
-  Bande accompagnant le projet présenté à l'enquête d'utilité publique DUP

 Bassin versant

Cours d'eau au sens de la loi sur l'eau

-  Cours d'eau biologique
-  Cours d'eau hydraulique seul



0 500 1 000
Mètres

Date : 04/07/2024

Sources : DDTM34, EGIS
Fond de plan : BD ORTHO 2022 © IGN